

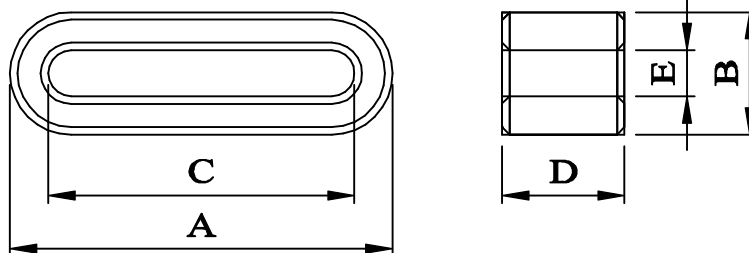
SPECIFICATION FOR APPROVAL

CUSTOMER	CUS . P/N	CORE - TECH P/N
		K5A RP 16X5X5

* STRUCTURAL SPECIFICATION

SHAPE & DIMENSIONS:

A	B	C	D	E
16.0± 0.4	5.0± 0.3	11.5± 0.4	5.0± 0.3	0.50± $\begin{matrix} 0.6 \\ 0.0 \end{matrix}$



* MATERIAL PROPERTIES

MATERIAL	INITIAL PERMEABILITY μ_i	CURIE TEMP T.C(° C)	SPECIFIC GRAVITY (g/Cm ³)	p (Ω-cm)
FERRITE	700 ± 25%	>140	4.8	10⁶

CORE-TECH CORPORATION

TEL: (03)4861211 FAX: (03)4861210

E-mail: coretech@tpts1.seed.net tw

http: www.globalsources. com/coretech.co.

CUSTOMER

NO: _____
DATE: _____



SPECIFICATION FOR APPROVAL

DESCRIPTION : EMI SUPPRESSOR FERRITE CORES (FLAT CABLE TYPE)

CUSTOMER P/N: _____

CORE-TECH P/N K5A RP 16X5X5

APPROVED		SIGNATURE			
NOT APPROVED					

THIS SPACE IS USED FOR CUTOMER'S APPROVAL

APPROVED BY	
CHECKED BY	
DRAWN BY	

CORE-TECH CORPORATION
 TEL: (03)4861211 FAX: (03)4861210
 E-mail: coretech@tpts1 .seed.net. Tw.
 http:www.globalsources. com/coretech.co.

SPECIFICATION FOR APPROVL

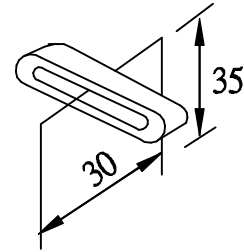
CUSTOMER	CUS . P/N	CORE - TECH P/N
		K5A RP 16X5X5

* ELECTRICAL SPECIFICATION

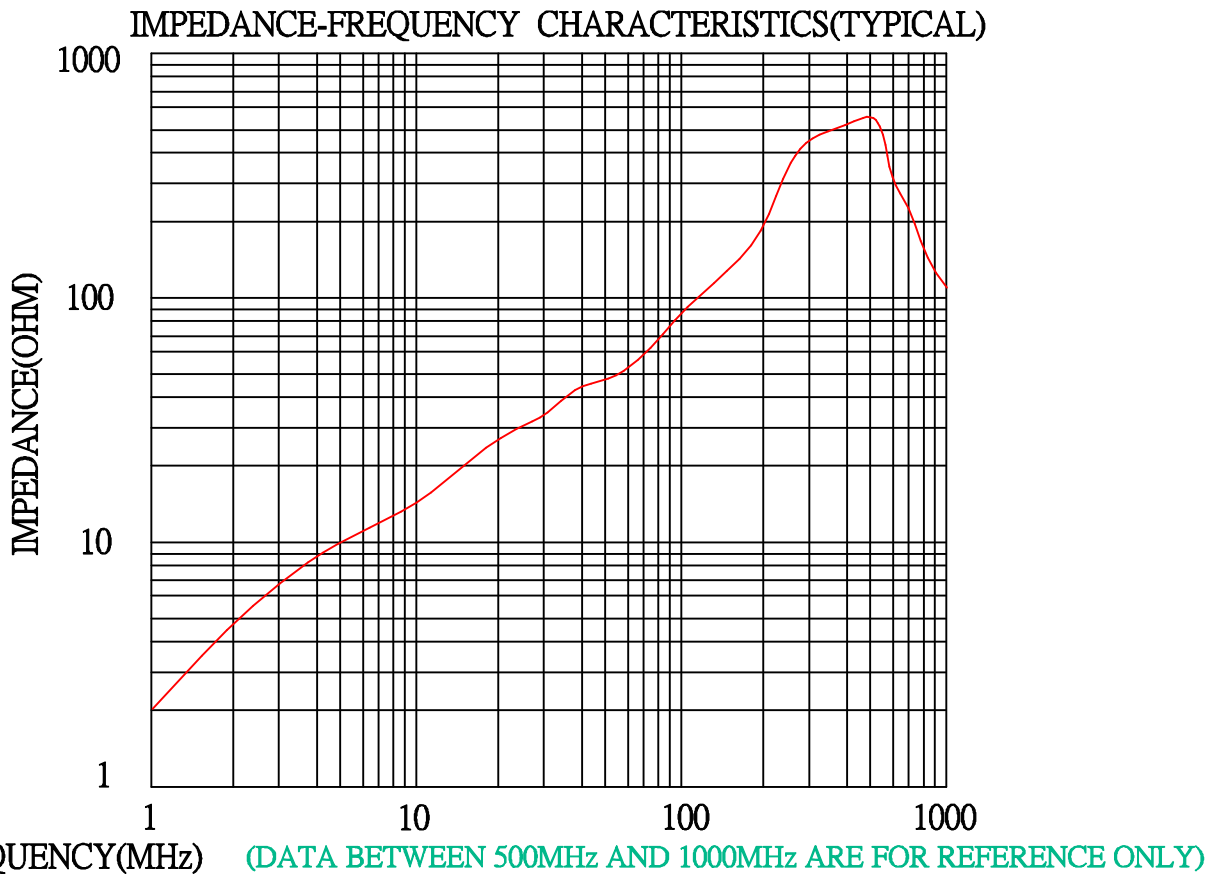
$$Z_1 = \underline{20}^{-0} \Omega \quad \text{AT} \quad \underline{25\text{MHz}}$$

$$Z_2 = \underline{60}^{-0} \Omega \quad \text{AT} \quad \underline{100\text{MHz}}$$

TEST DRAWING:



TEST INSTRUMENT : HP4191A
 FIXTURE : HP16092A
 WIRE: 2UEW 0.5X100 mm X 1TS



FREQUENCY (MHz)	1	5	10	25	30	40	50	100	200	300	400	500	600	700	800	900	1000
IMPEDANCE (OHM)	2	10	16	30	34	42	49	85	193	479	520	566	309	214	169	143	126

CORE-TECH CORPORATION

TEL: (03)4861211 FAX: (03)4861210

E-mail: coretech@tpts1.seed.net.tw

http: www.globalsources.com/coretech.co.